

Adabting the Environment

Iceland



The pier in Sauðárkrókur

We lined up rocks all around the sea that is closest to the pier. That is supposed to help with stopping the sand from getting into the pier, to minimise the big waves and also to make better conditions for the boats and ships to park in the pier.



Sauđá river displacement

We displaced the Sauđá river that ran through our town. Because it was flooding the houses all the time. We also got more space from doing that and made a sport turf with the space. Our river is just in another place right now but still there.



Isolation for our houses

We make an isolation for the houses to keep them warm, the isolation we use is called rock wool and is made out of sand. The factory in Sauðárkrókur that makes the isolation is the only factory in the country that makes isolation



A road was moved

A road in Skagafjörður was moved because when they were about to make the road all the machines just all of the sudden broke down. When they went to fix all of the machine it looks like someone or something took down the machines. When they get back to the road and get back to work, it all happened again so they just moved the road and it did not happen again. That's why they thought there were Elves that lived there.



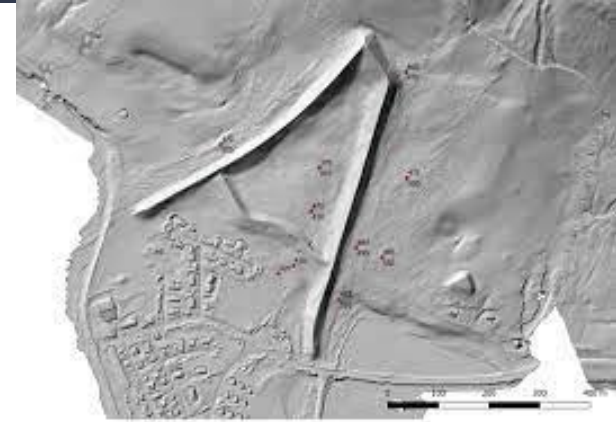
Tunnels

In Iceland We drill tunnels through mountains and under the sea to make routs shorter. We make the tunnels with drills and explosives.



Rockslide and avalanche barriers

A lot of towns in Iceland are built under mountains and have man built barriers above the town that protect the buildings from rockslides and avalanches.



Recovering the wetlands

To make more space for harvesting we dig long ditches to dry the wetlands, but it is estimated that $\frac{2}{3}$ of all greenhouse gas emitted in Iceland is from dried wetlands. That is why it's important we start to reclaim wetlands.

